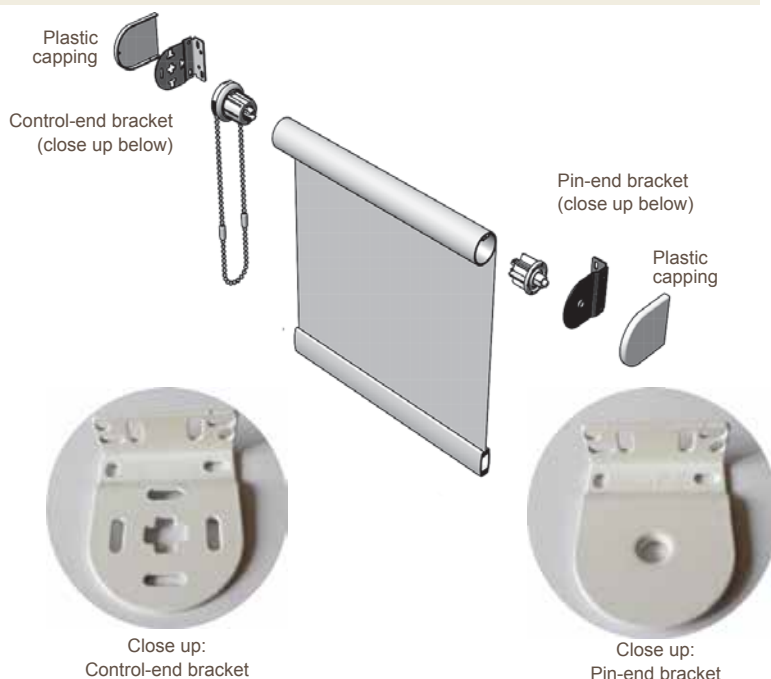


STEP 1 Fit the brackets

Your blind will come with metal brackets as shown in the picture on the right. The brackets can be face fixed, top fixed or side fixed following the instructions below.

One of the brackets supplied with your roller blind will have a round hole in the middle - this is the **Pin-end** bracket. The other bracket will have a cross-shaped hole in the middle - this is the **Control-end** bracket. If you have ordered your roller blind to have the control on the right-hand side then use the **Control-end** bracket on the right-hand side of your window. If you have ordered your roller blind to have the control on the left-hand side then use the **Control-end** bracket on the left-hand side of your window. Both of the brackets must be fixed so that the fixings are on the inside of the brackets where they will be hidden by the roller when in position.

You will have decided how you want to fit your blind when you measured for it and when you ordered it. Please follow the corresponding instructions below:

**OPTION 1** Inside the window recess - **Recess Fitting**

Carefully select fixings appropriate to the material you want to fix to. Usually this will be the window frame, lintel or wall. Fix the brackets as close to the top corner on each side as possible. If there are window handles present which will impede the fabric of the roller blind when lowered then it may be better to fix the brackets by top-fixing to the lintel or side-fixing to the wall rather than fixing directly to the window frame. Make sure that the brackets are positioned far enough away from the window frame so that the fabric will not be impeded. Ensure the brackets are level with each other before fixing. Fix the brackets securely but do not overtighten.

OPTION 2 Outside the window recess - **Exact fitting**

Measure the width of the fabric on your roller blind. Add 35mm to this measurement to calculate the distance that the outside of the fixing brackets will need to be apart when fixed. Carefully select fixings appropriate to the material you want to fix to. Usually this will be the wall. Mark the position of the brackets at the distance you have calculated apart and at the height you decided you wanted the roller blind to be fixed at when you measured before ordering. Ensure the brackets are level with each other before fixing. Fix the brackets securely but do not overtighten.

STEP 2 Fit the blind

Your roller blind will be supplied with a fabric band wrapped around the roll. This is to stop the blind from unrolling and so that you have a place to hold the blind whilst fitting. Do not remove the wrap until the blind is securely fitted into its brackets. This will ensure the blind will not lose its start position.

Offer the blind up to the brackets with the control on the correct side as you ordered and the fabric hanging from the back of the roller tube. The opposite end to the **Control-end** is the **Spring-plunger** end. Fit the **Spring-plunger** end into the **Pin-end** bracket first. With the **Control-end** locating hook pointing downwards and the chain guard lug at the top, place the hook into the vertical part of the cross-shaped hole of the **Control-end** bracket. Allow the hook to drop downwards so that it locks into place in the bracket. Fit the plastic cover caps onto the brackets if desired. Remove the fabric wrap. You are now ready to fit the **Child Safety Device**.

WARNING - Young children can be strangled by loops in pull chords, chains, tapes and inner cords that operate the product. To avoid strangulation and entanglement, keep cords out of the reach of young children. Cords may become wrapped around a child's neck. Move beds, cots and furniture away from window covering cords. Do not tie cords together. Make sure cords do not twist and create a loop.

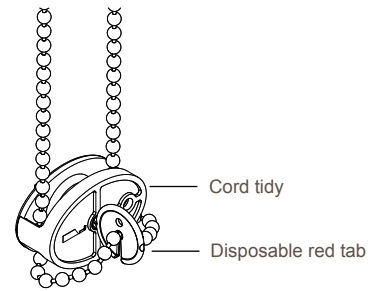
Child Safety Device

Your blind will come with either a **Cord Tidy** child safety device or a **P-Clip** child safety device. If you have a **Cord Tidy** child safety device then please follow the instructions below. If you have a **P-Clip** child safety device then please follow the instructions on the following page.

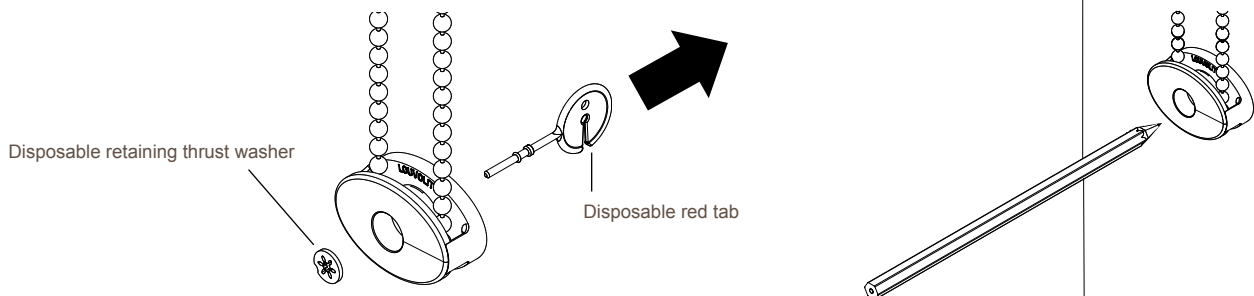
STEP 3

Fit the Child Safety Device - Instructions for **Cord Tidy** child safety device

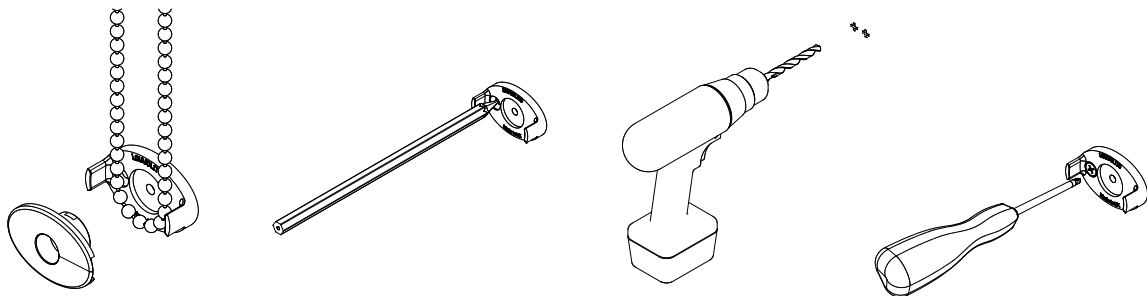
The Cord tidy will be attached to the chain. The Cord Tidy is a two piece device and will arrive with a disposable red tab fitted to it. The Cord Tidy **MUST** be fitted to the wall as follows. Children can strangle if this safety device is not installed. Always use this device to keep the chain out of reach of children.



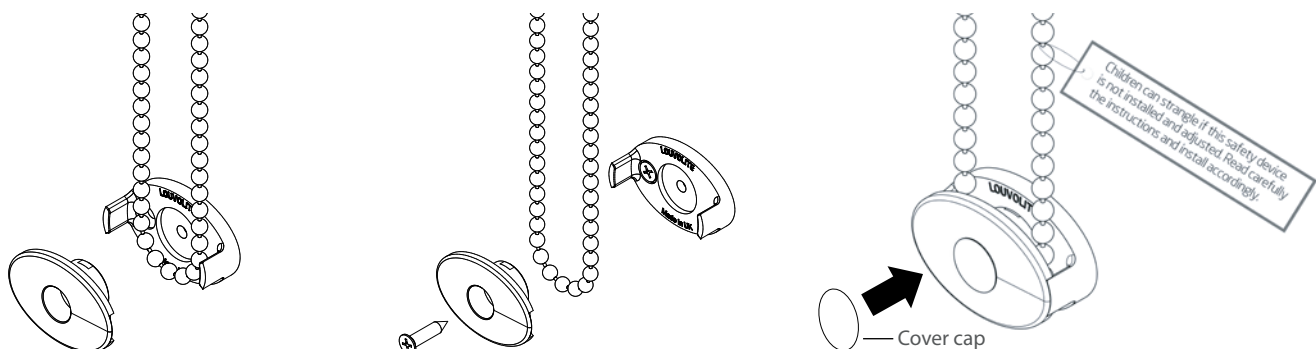
- 1 Remove the disposable red tab by disengaging it from the chain and then pull out the disposable red tab.
- 2 Position the cord tidy to the wall at the furthest distance below the roller tube adding appropriate tension to the chain and mark its location.



- 3 Split the cord tidy and mark the remaining offset hole position before drilling and plugging both location holes if necessary. Screw into the offset hole to fix the back piece of the cord tidy to the wall.



- 4 Re-assemble the cord tidy with the chain and fix it in previously marked position with a screw through the centre hole.
- 5 Push fit a cover cap over the screw hole opening.



Child Safety Device

Your blind will come with either a **Cord Tidy** child safety device or a **P-Clip** child safety device. If you have a **P-Clip** child safety device then please follow the instructions below. If you have a **Cord Tidy** child safety device then please follow the instructions on the preceding page.

STEP 3

Fit the Child Safety Device - Instructions for P-Clip child safety device

The P-Clip will be attached to the chain. The P-Clip **MUST** be fitted to the wall as follows. Children can strangle if this safety device is not installed. Always use this device to keep the chain out of reach of children and to prevent looped cords becoming slack.



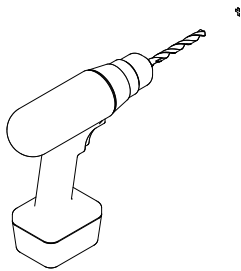
- 1 Make sure the P-Clip is in the chain.



- 2 Position the P-Clip to the wall at the furthest distance below the roller tube adding tension to the chain so that it is taut. Mark the location of the hole in the P-Clip on the wall.



- 3 If necessary drill and plug the hole where you have marked the P-Clip to be fixed.



- 4 With the chain in place in the P-Clip, fix the P-Clip into position on the wall with a screw.

